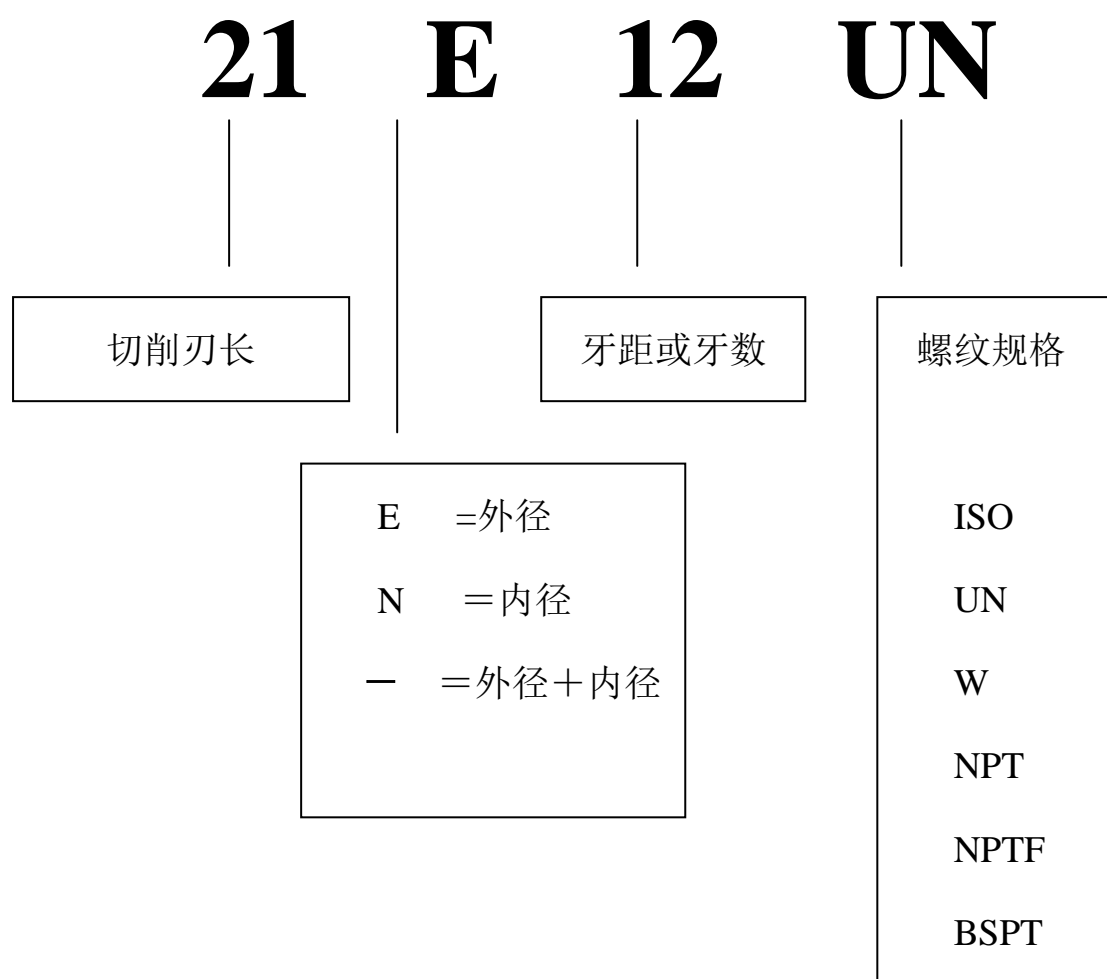
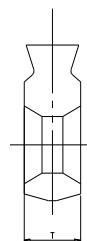
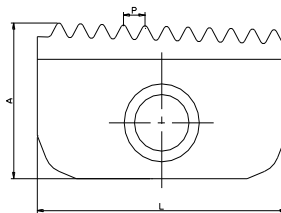
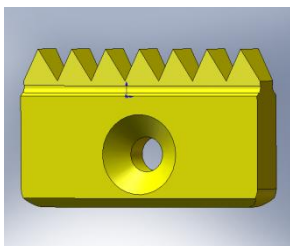
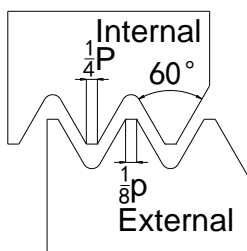


产品编号

螺纹铣刀片表示方法



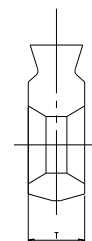
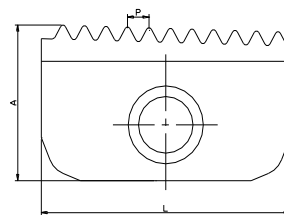
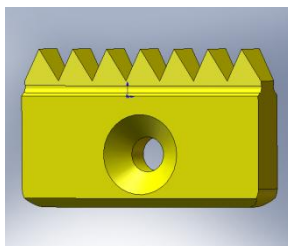
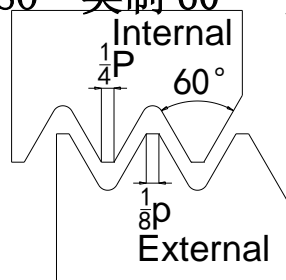
ISO 公制 完全形



螺距 mm		切削刃长 L				
		12mm	14mm	21mm	30mm	40mm
0.5	Ext.					
	Int.	12 N 0.5 ISO	14 N 0.5 ISO			
0.75	Ext.		14 E 0.75ISO			
	Int.	12 N 0.75ISO	14 N 0.75ISO			
1	Ext.		14 E 1.0 ISO	21 E 1.0 ISO		
	Int.	12 N 1.0 ISO	14 N 1.0 ISO	21 N 1.0 ISO		
1.25	Ext.		14 E 1.25ISO			
	Int.	12 N 1.25ISO	14 N 1.25ISO			
1.5	Ext.		14 E 1.5 ISO	21 E 1.5 ISO	30 E 1.5 ISO	40 E 1.5 ISO
	Int.	12 N 1.5 ISO	14 N 1.5 ISO	21 N 1.5 ISO	30 N 1.5 ISO	40 N 1.5 ISO
1.75	Ext.		14 E 1.75ISO			
	Int.		14 N 1.75ISO	21 N 1.75ISO		
2	Ext.		14 E 2.0 ISO	21 E 2.0 ISO	30 E 2.0 ISO	40 E 2.0 ISO
	Int.		14 N 2.0 ISO	21 N 2.0 ISO	30 N 2.0 ISO	40 N 2.0 ISO
2.5	Ext.		14 E 2.5 ISO	21 E 2.5 ISO		
	Int.		14 N 2.5 ISO	21 N 2.5 ISO		
3	Ext.			21 E 3.0 ISO	30 E 3.0 ISO	40 E 3.0 ISO
	Int.			21 N 3.0 ISO	30 N 3.0 ISO	40 N 3.0 ISO
3.5	Ext.				30 E 3.5 ISO	
	Int.			21 N 3.5 ISO	30 N 3.5 ISO	40 N 3.5 ISO
4	Ext.				30 E 4.0 ISO	40 E 4.0 ISO
	Int.				30 N 4.0 ISO	40 N 4.0 ISO
4.5	Ext.					
	Int.				30 N 4.5 ISO	40 N 4.5 ISO
5	Ext.					40 E 5.0 ISO
	Int.					40 N 5.0 ISO
5.5	Ext.					
	Int.					40 N 5.5 ISO
6	Ext.					40 E 6.0 ISO
	Int.					40 N 6.0 ISO

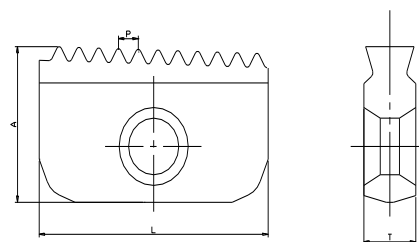
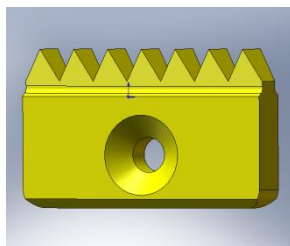
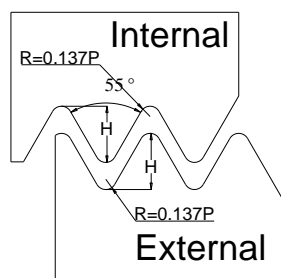
H	6.3	7.5	12	16	20
T	2.9	3.1	4.7	5.5	6.3

ISO 英制 60° 完全形 (UN、UNC、UNF)



螺距 TPI		切削刃长 L				
		12mm	14mm	21mm	30mm	40mm
32	Ext.		14 E 32 UN			
	Int.	12 N 32 UN	14 N 32 UN			
28	Ext.		14 E 28 UN			
	Int.	12 N 28 UN	14 N 28 UN			
27	Ext.					
	Int.		14 N 27 UN			
24	Ext.		14 E 24 UN	21 E 24 UN		
	Int.	12 N 24 UN	14 N 24 UN	21 N 24 UN		
20	Ext.		14 E 20 UN	21 E 20 UN	30 E 20 UN	
	Int.	12 N 20 UN	14 N 20 UN	21 N 20 UN	30 N 20 UN	
18	Ext.		14 E 18 UN	21 E 18 UN	30 E 18 UN	
	Int.	12 N 18 UN	14 N 18 UN	21 N 18 UN	30 N 18 UN	
16	Ext.		14 E 16 UN	21 E 16 UN	30 E 16 UN	40 E 16 UN
	Int.	12 N 16 UN	14 N 16 UN	21 N 16 UN	30 N 16 UN	40 N 16 UN
14	Ext.		14 E 14 UN	21 E 14 UN	30 E 14 UN	40 E 14 UN
	Int.		14 N 14 UN	21 N 14 UN	30 N 14 UN	40 N 14 UN
12	Ext.		14 E 12 UN	21 E 12 UN	30 E 12 UN	40 E 12 UN
	Int.		14 N 12 UN	21 N 12 UN	30 N 12 UN	40 N 12 UN
10	Ext.			21 E 10 UN	30 E 10 UN	40 E 10 UN
	Int.		14 N 10 UN	21 N 10 UN	30 N 10 UN	40 N 10 UN
8	Ext.				30 E 8 UN	40 E 8 UN
	Int.			21 N 8 UN	30 N 8 UN	40 N 8 UN
7	Ext.					
	Int.			21 N 7 UN		
6	Ext.				30 E 6 UN	40 E 6 UN
	Int.				30 N 6 UN	40 N 6 UN
4.5	Ext.					
	Int.					40 I 4.5 UN
4	Ext.					
	Int.					40 I 4 UN
H		6.3	7.5	12	16	20
T		2.9	3.1	4.7	5.5	6.3

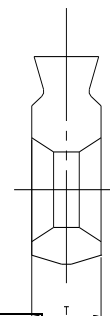
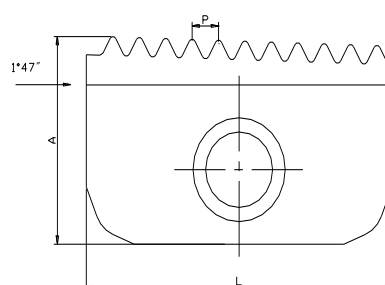
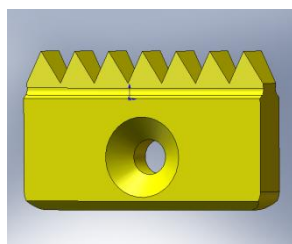
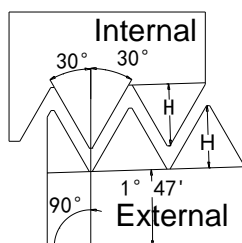
惠氏 55° 完全形 BSW、BSF、BSP



螺距 TPI	切削刃长 L				
	12mm	14mm	21mm	30mm	40mm
24		14-24 W			
20		14-20 W	21-20 W		
19	12-19 W	14-19 W	21-19 W		
16		14-16 W	21-16 W	30-16 W	
14		14-14 W	21-14 W	30-14 W	
11			21-11 W	30-11 W	40-11 W
8					40-8 W

H	6.3	7.5	12	16	20
T	2.9	3.1	4.7	5.5	6.3

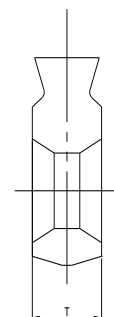
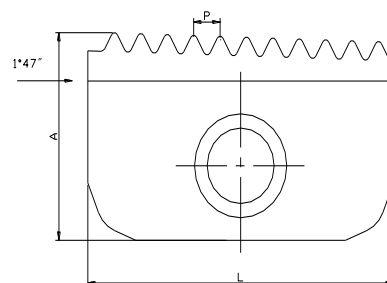
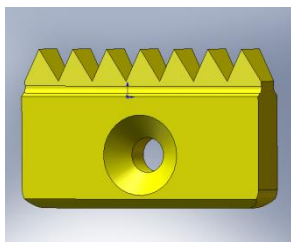
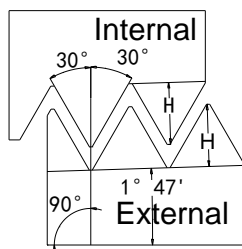
美国标准管螺纹 NPT



螺距 TPI	切削刃长 L				
	12mm	14mm	21mm	30mm	40mm
18	12-18 NPT	14-18 NPT			
14		14-14 NPT	21-14 NPT		
11.5			21-11.5 NPT	30-11.5 NPT	40-11.5 NPT
8				30-8 NPT	40-8 NPT

H	6.3	7.5	12	16	20
T	2.9	3.1	4.7	5.5	6.3

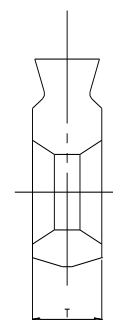
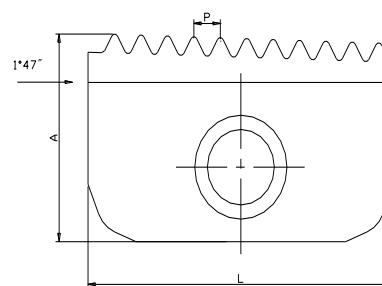
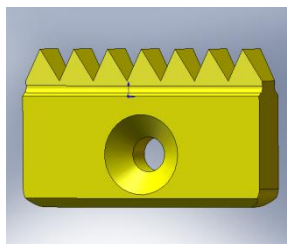
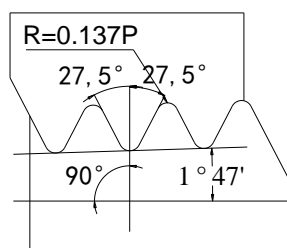
美国干密封管螺纹标准 NPTF



螺距 TPI	切削刃长 L				
	12mm	14mm	21mm	30mm	40mm
18	12-18 NPTF	14-18 NPTF			
14		14-14 NPTF	21-14 NPTF		
11.5			21-11.5 NPTF	30-11.5 NPTF	40-11.5 NPTF
8				30-8 NPTF	40-8 NPTF

H	6.3	7.5	12	16	20
T	2.9	3.1	4.7	5.5	6.3

英国标准管螺纹 BSPT



螺距 TPI	切削刃长 L				
	12mm	14mm	21mm	30mm	40mm
19	12-19 BSPT	14-19 BSPT			
14		14-14 BSPT	21-14 BSPT		
11			21-11 BSPT	30-11 BSPT	30-11 BSPT

H	6.3	7.5	12	16	20
T	2.9	3.1	4.7	5.5	6.3